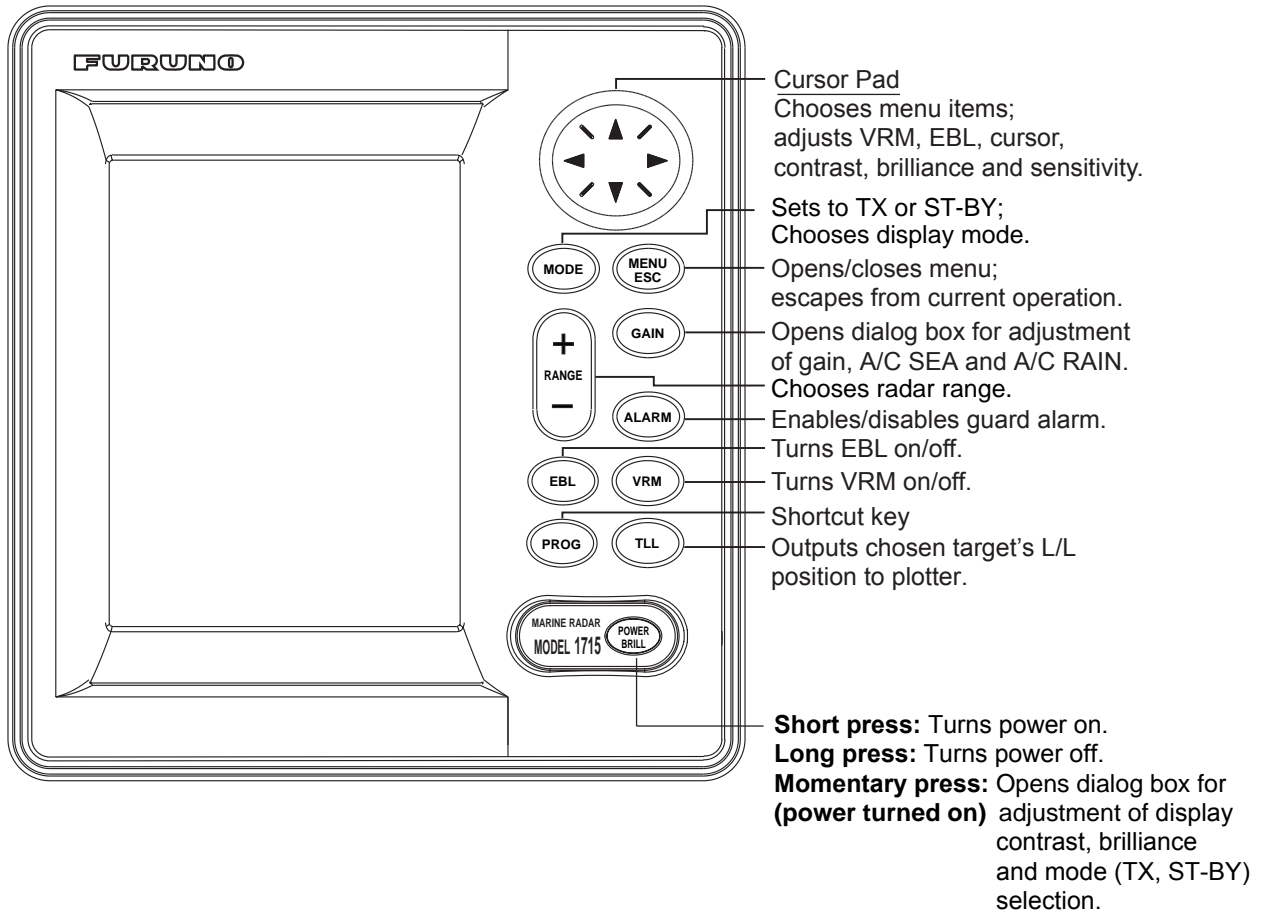


MARINE RADAR MODEL 1715

Operator's Guide

The purpose of this Operator's Guide is to provide basic operating procedures for this equipment. For more detailed information see the Operator's Manual.



Power On/Off

Press the **POWER/BRILL** key to turn the power on. When turning the power off, press and hold down the **POWER/BRILL** key until the screen goes off.

Transmitting, Standby

1. Press the **POWER/BRILL** key momentarily.
2. Press the **MODE** key to go to stand-by and transmit status alternately.
3. Press the **MENU/ESC** key.



Adjusting Contrast, Brilliance

1. Press the **POWER/BRILL** key momentarily.
2. Press the right or left arrow to adjust contrast.
3. Press the right or left arrow to adjust brilliance.
4. Press the **MENU/ESC** key.

Choosing the Range

Press the **RANGE+** or **RANGE-** key.

Auto Sensitivity

1. Press the **GAIN** key several times to show the gain window.
2. Press the up arrow to choose AUTO.
3. Press the right arrow to show the window.
4. Choose ROUGH, MODERATE or CALM sea conditions, accordingly.
5. Press left arrow to close the window.

Auto Clutter Reduction

1. Press the **GAIN** key several times to show the A/C SEA window.
2. Press up arrow to choose AUTO.
3. Press the left arrow to show the window.
4. Choose ROUGH, MODERATE or CALM sea conditions, accordingly.
5. Press left arrow to close the window.

Measuring the Range

1. Press the **VRM** key.
2. Operate the cursor pad to place the VRM on the inside edge of the target.
3. Check the VRM readout to find the range to the target.

Measuring the Bearing

1. Press the **EBL** key.
2. Operate the cursor pad to bisect the target with the EBL.
3. Check the EBL readout to find the bearing to the target.

Shifting the Display

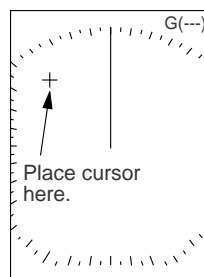
1. Place the cursor where you want to shift own ship position.
2. Press the **MODE** key.
3. Press up arrow to choose SHIFT (MANUAL).
4. Press the **MENU/ESC** key.
5. To cancel the shifted display, open the Display Mode menu, set SHIFT to NORMAL and then press the **MENU/ESC** key.

Zoom

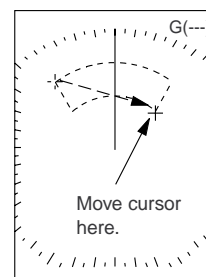
1. Place the cursor where you want to zoom.
2. Press the **MODE** key.
3. Press the down arrow to choose ZOOM.
4. Press the **MENU/ESC** key.

Guard Alarm

1. Place the cursor at the top left corner for the zone and then press the **ALARM** key.
2. Move the cursor at the bottom right corner for the zone and then press the **ALARM** key.



Step 1



Step 2